

EBit 30



Ergonomic Design

I need a portable,light-weight ultrasound which is easy to go, easy to diagnose,easy to operate with sufficient measurement packages.

Lightweight (7.5Kg / 16.5lbs)

Independent angle 15"LED
(0° - 30° tilted)

Dediceted adapter Space

Dual transducer ports (Built-in)

Removable battery 2H in active mode

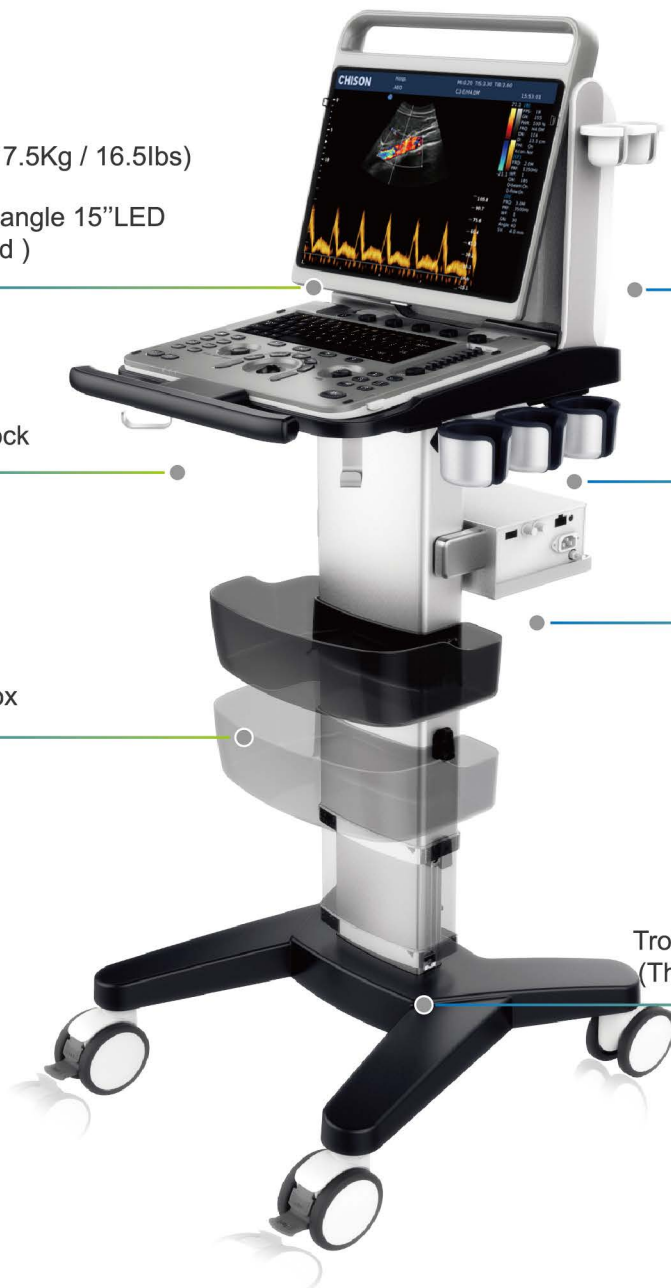
Theft-proof lock

Probe holders

Printer socket

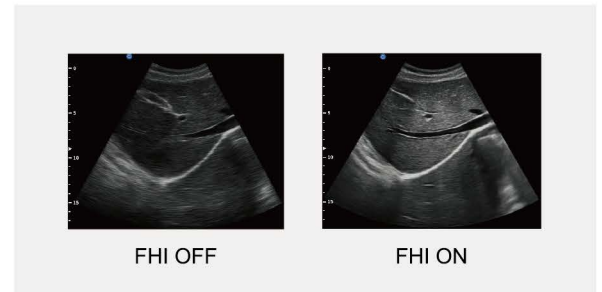
Accessory box

Trolley height adjustable
(Three levels available)



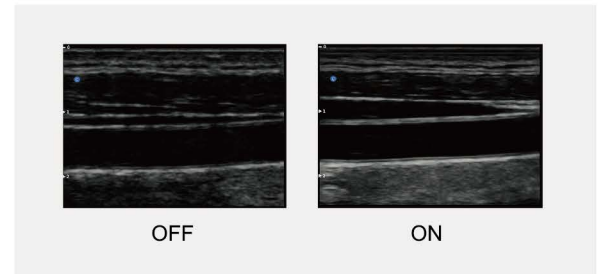
FHI

- FHI is an innovative harmonic imaging technology that uses multiple transmission and receiving methods based on the patients' size and weight. This allows the EBit to maintain image resolution when imaging larger patients.
- Better than traditional THI and phased harmonic which compromise the penetration.
- Chison's FHI technology greatly improves diagnostic abilities and clinical confidence in larger, difficult-to-image patients.



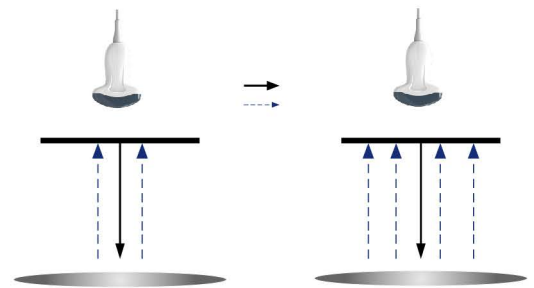
Q-image

- These innovative algorithms have strengthened the image enhancement results significantly.
- Advanced chipset is used to ensure fast frame rate.



Q-beam

- Compared to the traditional dual-beam former on most ultrasound machines, the EBit 30 uses quad-beam technology for ultrasound signal receiving.
- Doubles the volume of signals received from traditional methods, increasing image resolution and generating more accurate images.
- Produces higher frame rates, ensuring better diagnostic confidence and efficiency, especially for moving organs.



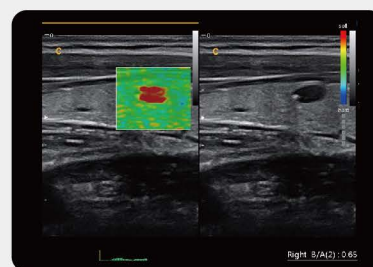
Virtual HD

- The latest innovation in real-time 4D with powerful imaging engine.
- Greatly strengthen the bond between mother and fetus.
- With moveable virtual light source.



Elastography

Elastography displays tissue stiffness in real time to provide doctors with additional diagnostic information when scanning organs like liver and breast.





2.0 - 6.8 MHz
Convex C3-E



4.0 - 15.0 MHz
Linear L7-E



7.0 - 18.0 MHz(With FHI)
Linear L12-E



4.0 - 15.0 MHz
Linear L7W-E



4.0 - 12.0 MHz
Transvaginal V6-E



4.0 - 15.0 MHz
Transvaginal V7-E



4.0 - 15.0 MHz
Trans-Rectal
L7R-E



2.0 - 6.8 MHz
Micro-Convex MC3-E



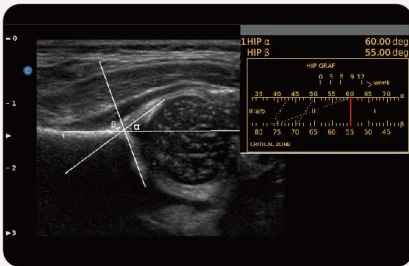
4.0 - 12.0 MHz
Micro-Convex MC6-E



4.0-10.7MHz
Micro-Convex MC5-E



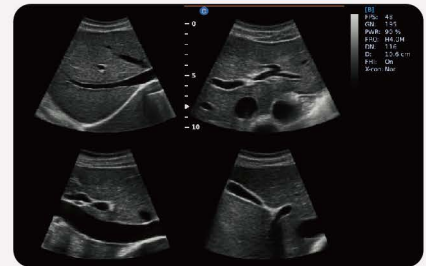
2.0MHz-6.8MHz
Volume V4-EV



HIP Graf



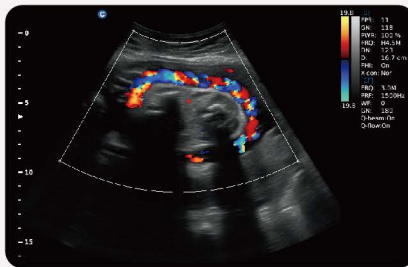
Gallbladder stone, B Mode



Abdomen, 4B Mode



Fetal face, Virtual HD



Umbilical cord, C Mode



Shoulder MSK, B Mode

CHISON Medical Technologies Co., Ltd.

Sales & Service Contact Address:

No.9, Xinhuihuan Road, Xinwu District, Wuxi, Jiangsu, China 214028

TEL : 0086-510-85310012 FAX : 0086-510-85310726 EMAIL : export@chison.com.cn

We reserve the right to make changes to this catalogue without prior notice
Please contact our local dealer for the latest information.

EBit 30-20190507