



i3

4D Color Doppler
Fast • Light • Quiet • Smart

Better Technologies



The revolutionary i3 provides you outstanding 2D images and fast 4D volume images, while the streamlined workflow makes your busy practices much easier and more efficient.

Better



Light

Light probe
Releases doctors from
scanning fatigue

Smart

Smart function
The latest technologies:
compound, i-Image , SRA, etc.
provide superb image

Quiet

Quiet probe
Vibration-free & Noise -free
probe allows better
care for mother and fetus

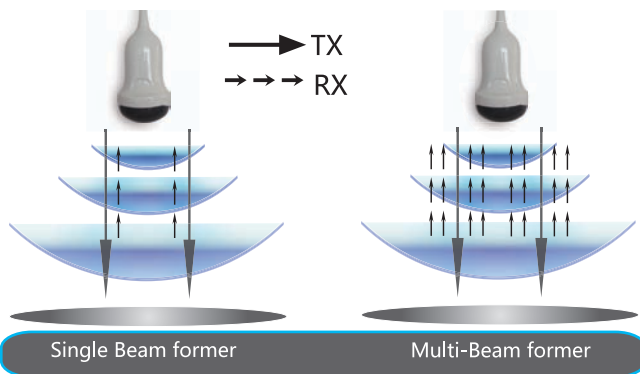
Fast

Fast speed
4D volume rate reveals
fetal movement in real
time

4T

Advanced Imaging Technologies

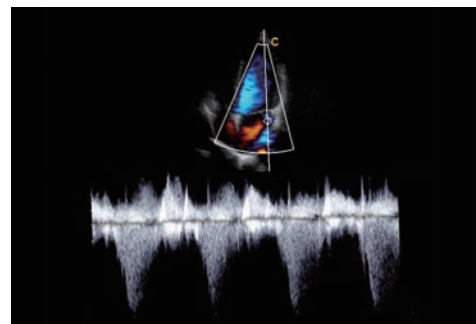
Multi-beam former technology



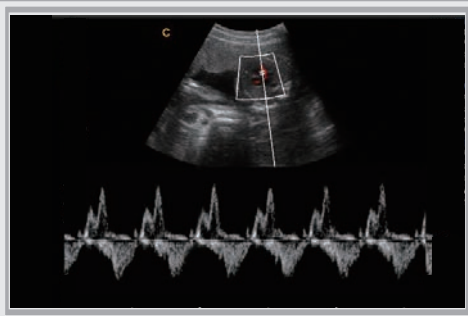
- Enhance signal processing speed
- Enhance time resolution
- Improve spatial resolution

Continuous Wave (CW) Doppler

CW is absolutely necessary for cardiac ultrasound to detect blood flow with high velocity and help doctors diagnose with more clinical information.



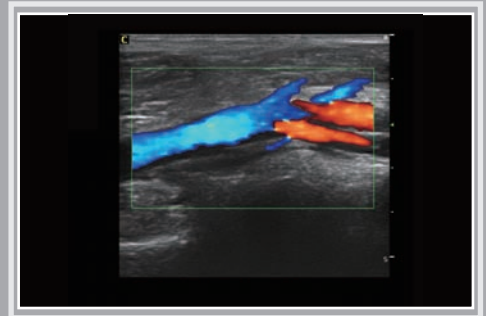
Clinical Value and Applications



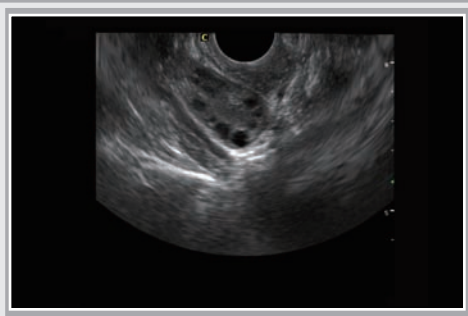
Fetal Heart, PW Mode



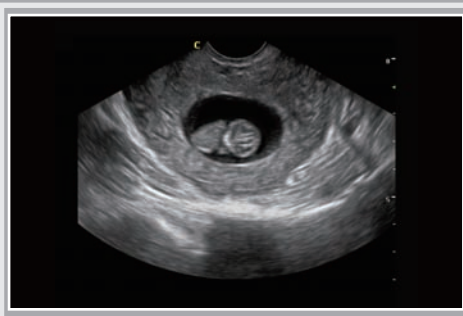
Umbilical Cord, CFM Mode



Popliteal Vein, CFM Mode



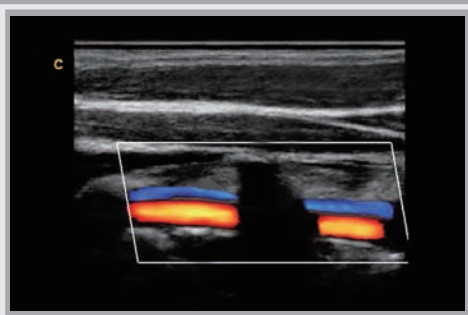
Ovary, B Mode



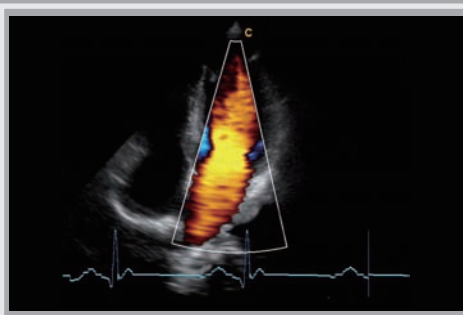
Early Pregnancy, B Mode



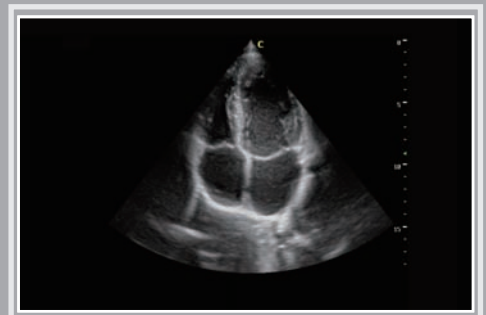
Fetal Face, 31 Weeks



Vertebral Artery, CFM Mode



Four Chambers View, ECG



Apical Four Chambers, B Mode

CHISON MEDICAL IMAGING CO., LTD.

Sales & Service Contact Address:

No. 9 Xin Hui Huan Road, New District, Wuxi, Jiang Su Province, CHINA214028

TEL: 0086-510-85310593 / 85310937

FAX: 0086-510-85310726

EMAIL: export@chison.com.cn

www.chison.com

Click the link below to follow us:



We reserve the right to make changes to this catalogue without prior notice
Please contact our local dealer for the latest information.

Ei3 20160601